

# B.I.S.A. «La Biagiola» International school of Archaeology Seasonal Campaign 2024-2025



LEARN, PRESERVE AND PROMOTE THE ARCHAEOLOGICAL  
HERITAGE, AND ENJOY THE JOURNEY

OCTOBER 4<sup>TH</sup> – AUGUST 14<sup>TH</sup> (FIVE TWO-WEEK SHIFTS)

SORANO, GROSSETO, TUSCANY, ITALY

INFO & CONTACT:

[HTTPS://WWW.CULTURATERRITORIO.ORG/](https://www.culturaterritorio.org/)

[INFO@CULTURATERRITORIO.ORG](mailto:INFO@CULTURATERRITORIO.ORG)



# B.I.S.A.

Since 2012, ACT has been actively involved in research, preservation, and promotion of the archaeological heritage in the Fiora river valley, with a strong focus on training the next generation of archaeologists and engaging the local community. We began with the multi-phase archaeological site of "la Biagiola," which also lends its name to our International School of Archaeological methodology. Over the years, we have expanded our efforts to include landscape archaeology projects, emergency and preservation excavations, digital heritage documentation, school-based education, public outreach, exhibitions, documentaries, lectures, and events.

Eventually, we've become a key reference for archaeology in this extraordinary region...

Our goal is to advance the understanding of the Archaeological Landscape of the Fiora Valley and its evolution over millennia. Simultaneously, we aim to provide high-quality training to students in excavation techniques, first phase survey methods, and archaeological documentation, incorporating the latest technologies.

The journey has only just begun, would you like to join us?!



## ***In short***

**WHO?** ARCHAEOLOGY, HISTORY, ART HISTORY, ANTHROPOLOGY, AND MUSEOLOGY STUDENTS.

**WHAT?** AN INTERNATIONAL SCHOOL OF ARCHAEOLOGY.

**WHEN?** EVERY YEAR, IN OCTOBER, FEBRUARY, MAY, JULY AND AUGUST, DIVIDED IN FIVE SHIFTS OF TWO WEEKS EACH.

**WHERE?** SORANO, TUSCANY, ITALY.

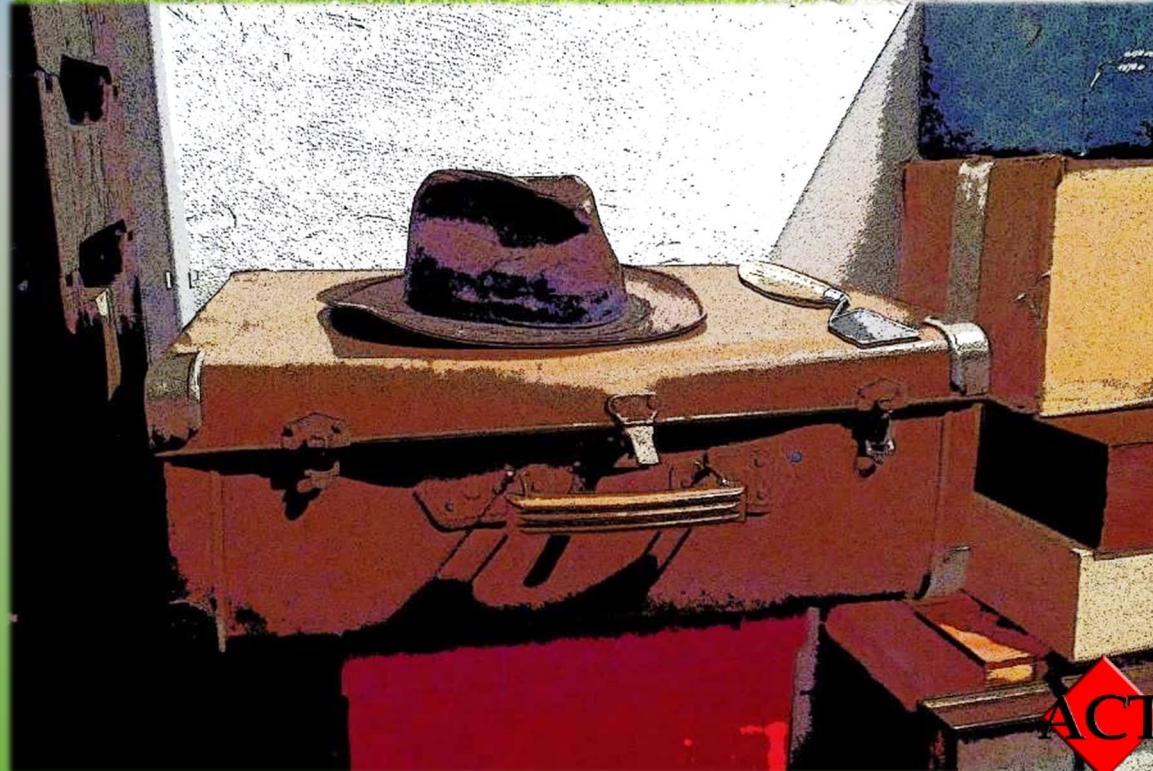
**WHY?** TO LEARN EXCAVATION TECHNIQUES, THE LATEST DIGITAL TECHNOLOGIES, AND THE LANDSCAPE ARCHAEOLOGY APPROACHES IN A REGION RICH IN HISTORY AND CULTURE, BEING PART OF A STIMULATING INTERNATIONAL ENVIRONMENT.

**HOW?** READ MORE IN THIS DOSSIER, THEN SEND US YOUR CV, A COVER LETTER, AND THE FORM THAT YOU CAN DOWNLOAD FROM OUR [WEBSITE](#).

FOR MORE INFORMATION, YOU CAN CONTACT US

[INFO@CULTURATERRITORIO.ORG](mailto:INFO@CULTURATERRITORIO.ORG)

**WHAT ARE YOU WAITING FOR? PACK YOUR BAGS AND JOIN US!**





## ***Fancy an archaeological campaign in Tuscany?***

We provide an exciting opportunity for a first-hand experience in a landscape archaeology study, on a region which history spans from prehistory to Middle Ages.

- You'll take part in the archaeological survey, working alongside expert archaeologists and foreign fellow students.
- You'll learn the latest digital technologies in architectural survey, simultaneous localization and mapping (SLAM), vSLAM 3D photogrammetry, and 3D rendering, right on the field.
- You will participate in the archaeological excavation of an Etruscan rock-cut necropolis and a multi-layered site, which includes a Roman villa and a cemetery.

This program is offered in collaboration with the Cultural Heritage Office of Tuscany, the regional authority that manages archaeological sites and monuments.

In addition to the archaeological experience, you will be able to enjoy a wide range of cultural sites, historic monuments, and natural sites of Tuscany.

B.I.S.A. program is open to all students of archaeology, anthropology, and related disciplines, but preference will be given to students with previous experience in the field of archaeology.

#ARCHEOLOGY, #CLASSICAL STUDIES, #DIGITAL HUMANITIES, #MEDIEVAL STUDIES, #PHOTOGRAMMETRY, #SLAM, #QGIS, #STANDING BUILDING ARCHAEOLOGY, #PUBLIC ARCHAEOLOGY, #ANTHROPOLOGY, #PREHISTORY, #PROTOHISTORY, #ETRUSCANS, #ROMANS, #MIDDLE AGES, #CERAMICS, #METALLURGY, #STANDING BUILDING ARCHAEOLOGY, #ARCHITECTURAL SURVEY, #TOPOGRAPHICAL SURVEY, #RECONNAISSANCE, #ARCHAEOMETRY, #LABORATORY.



# ***The 2024-25 Campaign***

After the remarkable outcomes of the previous archaeological survey campaigns, we are ready to sum up and teach our students the latest tricks and applications of modern digital reconstructions (Agisoft Metashape) and open-source Geographic Information Systems (QGIS).

Moreover, coursework will explore and focus on the major features of ancient Etruscan, Roman and Early-Medieval cultures.

The aims of the 2024-25 Campaign are to:

- carry out the archaeological survey of the middle Fiora valley ("The Stone and The River" Project);
- the archaeological excavation of the multi-layered site of 'La Biagiola' ('la Biagiola' Project);
- digital rendering of the most important sites, integrating vSLAM photogrammetric and LIDAR SLAM techniques (Interproject Framework);
- thanks to the collaboration with the "Parco la Città del Tufo", we will also have the opportunity to excavate a splendid section of the archaic necropolis of the Via Cava di San Sebastiano (Sovana Archaeological Park Project).

The program will be beneficial for both Classical and Medieval archaeologists.



# *“The Stone and the River” project*

Human settlement in the region is closely related to the river and the rocky landscape features.

The project consists in the diachronic investigation of this relationship, through the study of the traces that man has left in the rock over time: building (castles, churches, villas, sanctuaries, and hamlets) and carving (necropolis, hermitages, canals, and roads).

Furthermore, using the most modern technologies, and photogrammetric surveys, three-dimensional models of the most significant sites will be created.



# *The “Sovana Archaeological Park” project*

The collaboration between the Association "Cultura e Territorio" and the Archaeological Park of Sovana is crucial for uncovering, studying, and presenting to the public significant aspects of the region's rich necropolis landscape.

By combining resources and expertise, we are able to bring to light previously hidden layers of history, ensuring that these important archaeological findings are meticulously documented and preserved.

This partnership not only enhances our understanding of the ancient cultures that once thrived here but also makes these discoveries accessible to a broader audience, enriching the cultural heritage of the area.



# *“La Biagiola” project*

The core focus of our field school remains the investigation and enhancement of the multi-layered site of “La Biagiola.” Here, students will engage with the most advanced excavation and documentation methodologies, exploring the unfolding history of the region through the material evidence preserved at a site inhabited since the Protohistoric period. This site was later occupied by the Etruscans and Romans and subsequently repurposed as a cemetery by the Lombards and during the Medieval period. Through this hands-on experience, students will gain a profound understanding of the historical continuity and transformation that have shaped this region.





## ***Field activities***

We team up with the Sovana Archaeological Park to investigate six tombs dating back to the 8<sup>th</sup> and 7<sup>th</sup> centuries BCE. These ancient tombs offer a glimpse into the rituals, customs, and beliefs of one of Italy's most fascinating ancient peoples: the Etruscans.

Our collaboration with the Sovana Archaeological Park provides a unique opportunity to combine cutting-edge archaeological techniques with traditional excavation methods. Guided by expert archaeologists and historians, participants will engage in hands-on exploration, to piece together the puzzle of Etruscan life and culture.

By shedding new light on these ancient tombs, we not only expand the archaeological heritage of the region but also contribute to the broader body of knowledge surrounding the Etruscan civilization. From artifacts to elaborate burial practices, every excavation brings us closer to understanding the rich tapestry of Etruscan society and its enduring legacy.

Join us as we embark on this exciting archaeological quest to unearth the secrets of the Etruscans. Together with the Sovana Archaeological Park, let's uncover the hidden treasures of the past and celebrate the timeless allure of one of Italy's most captivating ancient civilizations.

The on-field activities of survey, photogrammetry and census will also be a portion of the training focus for the participants.

Students will have the opportunity to actively engage in documenting our findings. They will contribute by keeping detailed journals, creating cataloging sheets, and collaboratively discussing the interpretation of our discoveries. This hands-on involvement will not only deepen their understanding of the excavation process but also help them develop essential skills in archaeological documentation and analysis.

**The trainees will be guided through this new adventure by a team of skillful archaeologists who will explain clearly every aspect of the research process.**



# Masterclass

## Mobile journalism in archaeology

Are you tired of reading archaeological news articles riddled with inaccuracies, exaggerations, and sensationalism? As archaeologists, we often find ourselves disappointed or even infuriated by the way journalists present archaeological discoveries to the public. But what if there was a solution to bridge this gap between archaeology and journalism?

Introducing our mobile journalism course in archaeology, where precision meets storytelling in the digital age. In this innovative course, we delve into the art of mobile journalism, empowering archaeologists to become adept storytellers who can accurately convey the richness and significance of archaeological finds to the world.

Through hands-on training, participants will learn how to harness the power of mobile technology to capture compelling visuals, conduct interviews, and craft engaging narratives—all while upholding the highest standards of accuracy and integrity. Our expert instructors will guide you through every step of the journalistic process, from research and reporting to editing and publishing, ensuring that your archaeological stories resonate authentically with audiences worldwide.

Moreover, participants will have the unique opportunity to learn the fundamentals of archaeological journalism directly in the field, enriching their experience through immersion in authentic archaeological activities.

Join us on a transformative journey where you'll master the tools and techniques of mobile journalism while deepening your understanding of archaeology. Together, let's unlock the true potential of archaeological storytelling and inspire a new era of informed and enlightened journalism.

Don't let inaccuracies and sensationalism overshadow the true wonders of archaeology. Enroll in our mobile journalism course today and embark on a path towards becoming a trusted voice in the realm of archaeological storytelling.



# Masterclass

## Unleashing Precision: Laser Scanning with SLAM Technology in Archaeological Environments

Are you ready to revolutionize your approach to archaeological mapping and surveying? Join us for an exclusive masterclass on Laser Scanning with SLAM (Simultaneous Localization and Mapping) Technology, tailored specifically for mapping and cataloging rock structures with unparalleled accuracy, even in the most extreme conditions.

In this immersive masterclass, participants will dive into the cutting-edge world of laser scanning, exploring how SLAM technology enables precise and efficient data collection in challenging archaeological terrains. Led by experts in the field, you'll learn how to harness the power of state-of-the-art laser scanners and advanced software solutions, including open-source options, to capture highly detailed 3D models of rock formations with unprecedented clarity.

Through hands-on demonstrations and practical exercises, you'll master the intricacies of operating laser scanners in archaeological contexts, honing your skills in data acquisition, processing, and interpretation. From rugged landscapes to intricate cave systems, you'll discover how SLAM technology empowers archaeologists to overcome obstacles and capture comprehensive data sets that unveil the hidden secrets of ancient rock structures.

Whether you're a seasoned archaeologist looking to enhance your surveying techniques or a novice eager to explore the frontier of archaeological technology, this masterclass offers a unique opportunity to expand your expertise and elevate your research to new heights. Don't miss your chance to join us at the forefront of innovation in archaeological mapping and documentation.

Unlock the potential of laser scanning with SLAM technology and embark on a journey of discovery that reshapes the way we explore and preserve archaeological heritage.



## X120<sup>GO</sup> SLAM Laser Scanner

### Accurate & Versatile

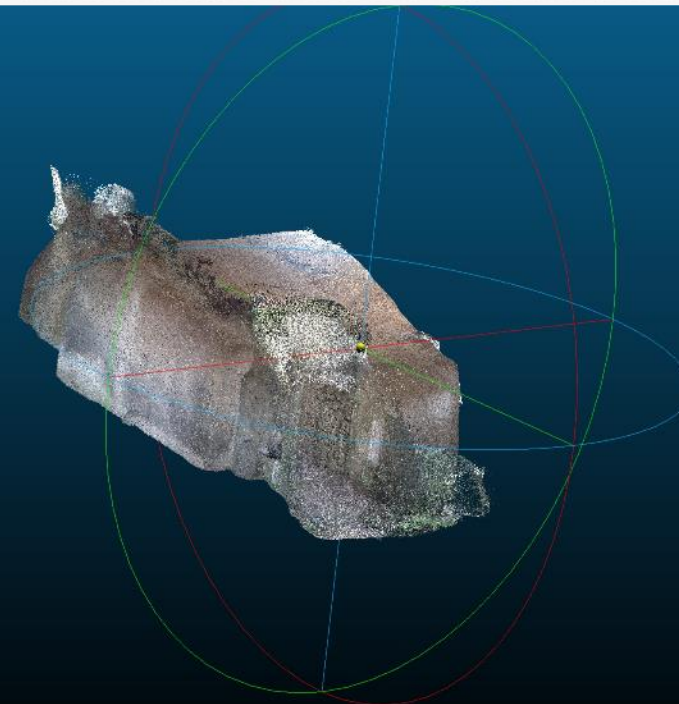
The system has a 360° rotating head, which can generate a 360°x270° point cloud coverage. Combined with the industry-level SLAM algorithm, it can obtain high-precision three-dimensional point cloud data of the surrounding environment without light and GPS. Equipped with three 5MP cameras to generate a 200°FOV horizontal and 100°FOV vertical, capable of synchronously obtaining texture information and producing colour point clouds and partial panoramic images.

X120<sup>GO</sup> can use *GOapp* to check and manage projects which will be updated and displayed synchronously. Real-time SLAM mapping and preview can be achieved via *GOapp*.

*GOpost* can perform post-processing of collected data, generate high-precision and high-definition color point clouds, produce partial panoramic images, display point cloud and perform optimization processing.

X120<sup>GO</sup> has an integrated structure design with a built-in control and storage system and built-in replaceable lithium batteries. Once pressed the start button, X120<sup>GO</sup> can start operations immediately, making data acquisition more efficient and convenient.

You can manage your point clouds in the office with our [Cube-3d](#) and [Stonex Reconstructor](#) Software or, if you need something different, you can use PointCab. Thanks to the collaboration between Stonex and PointCab, you can process X120<sup>GO</sup> data with it.



# Masterclass

## Elevating Exploration: Masterclass on Photogrammetry in Archaeology

Embark on an immersive journey into the world of photogrammetry with our upcoming masterclass tailored for archaeological enthusiasts and professionals alike. Join us as we delve into the meticulous cataloging and mapping of the archaeological heritage of the Fiora Valley, where each discovery warrants intricate detail.

In this masterclass, participants will not only learn the fundamental principles of photogrammetry but also delve into advanced techniques for detailed imaging and 3D reconstruction. As we navigate through the rich history of the Fiora Valley, you'll discover how to capture the essence of archaeological finds with unprecedented precision, using state-of-the-art tools and methodologies.

Moreover, our masterclass will equip you with the skills to transform your smartphone into a versatile and rapid photogrammetry tool, enabling you to capture high-quality images and generate accurate 3D models on the go. Additionally, you'll learn the ins and outs of employing compact drones for surveying and image capture, even in the most challenging conditions.

Led by experienced professionals in the field, this masterclass offers a unique opportunity to merge cutting-edge technology with archaeological exploration. Whether you're a professional archaeologist or an aspiring enthusiast, join us as we unlock the potential of photogrammetry and redefine the boundaries of archaeological mapping.

Enroll in our masterclass and become a pioneer in the field of archaeological photogrammetry. Together, let's illuminate the past with unprecedented clarity and precision.





As part of the educational and hands-on activities, students will engage in fieldwork, thanks to our Mobile Technical Laboratory. This setup allows them to perform practical tasks directly at the excavation site, integrating theoretical knowledge with real-world application and enhancing their learning experience.

# ***Masterclass***

## **The 'Divining Rod': geophysical survey techniques for archaeological exploration and site mapping**

The students will also have the opportunity to learn geophysical survey methodologies, which are crucial for identifying new sites and, more importantly, for investigating and mapping those that have been located but not yet excavated.

These techniques will provide them with hands-on experience in using advanced tools to detect subsurface features, helping to guide future excavations and offering a non-invasive way to understand the extent and structure of archaeological sites before digging begins.

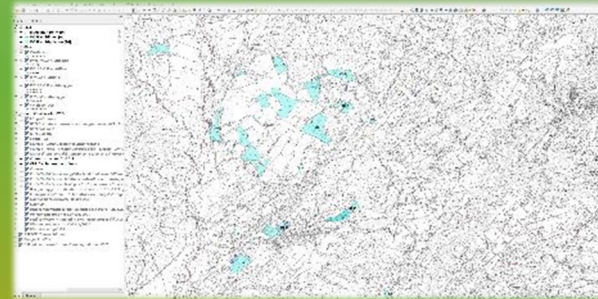
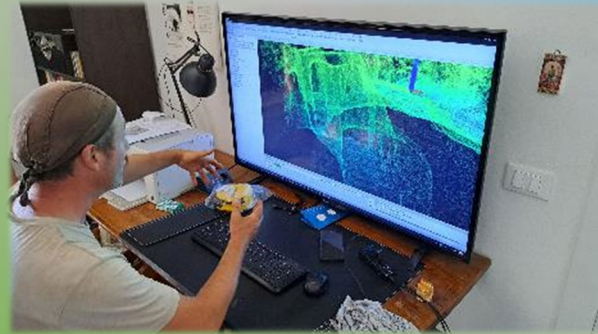


# Lab activities

Laboratories will run parallel to field activities, involving small groups of students at a time, under the supervision of a staff instructor.

Training in drawing, pottery, vSLAM, S.L.A.M., G.I.S., and open-source archaeological record labs will be provided.

In addition, depending on the needs of the field research, the laboratories will also focus on other topics, such as Archaeology of standing buildings, metal find preservation, and anthropological analysis.



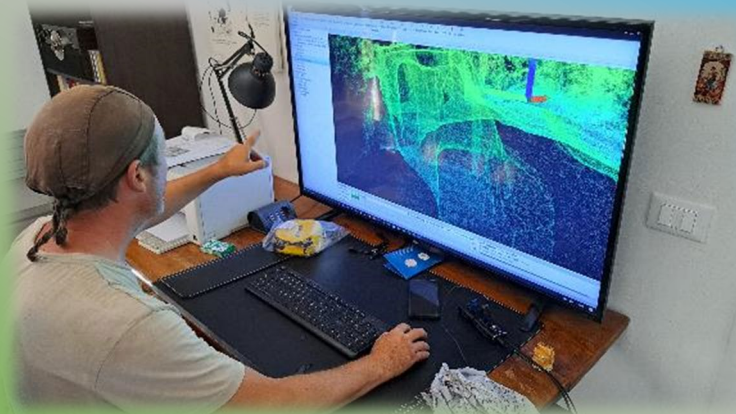
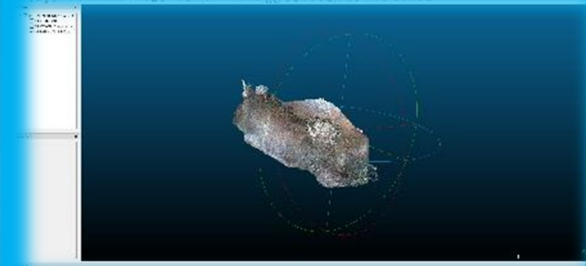
# Didactics

Lectures will be focused on archaeological method and theory applied to the case study of the middle Fiora river valley

They will take place after fieldwork, interposed to cultural trips and lab activities.

## TOPICS OF THE LECTURES:

- the historical context of the region;
- the orohydrographic and geological features of the territory and historical environmental context;
- the archaeological context of the region;
- landscape archaeology;
- basic and advanced theory and methodology in stratigraphic archaeological excavation;
- light archaeology (survey and other non-invasive techniques);
- G.I.S., SLAM, LiDAR, and Photogrammetry in archaeology
- findings treatment and analysis;
- public archeology. PLeiAdE and ArcheoAmiata: two case studies;
- standing buildings stratigraphic analysis;
- etruscan cities of the dead;
- wine and oil at roman time;
- Lombard smithcraft.



## ***Schedule and commitment***

<b>Dates</b>	<b>Session</b>
October 4 <sup>th</sup> to 18 <sup>th</sup>	Autumn
February 7 <sup>th</sup> to 21 <sup>st</sup>	Winter
May 2 <sup>nd</sup> to 16 <sup>th</sup>	Spring
July 17 <sup>th</sup> to 31 <sup>st</sup>	Summer, First Shift
August 1 <sup>st</sup> to 14 <sup>th</sup>	Summer, Second Shift

The School is organized into four annual sessions (one per season), with each basic module lasting two weeks and two shifts in summer.

For a more thorough preparation, we recommend attending at least two sessions, which is obviously easier in summer when the two sessions are consecutive.

Those who complete three sessions (even over two different years) will have the opportunity, if desired, to access advanced content and participate in research projects.



# Timetable

Activity	2-weeks shift, hours
Field activities	60
Lab activities	20
Lectures, cultural trips	16
<b>Total work hours</b>	<b>96</b>

The field activity will take place from Monday to Friday, following two days entirely dedicated to introductory lectures. Saturday morning will be devoted to cultural excursions in the surroundings. Activities will be subject to weather conditions, and in case of bad weather, laboratory work and museum visits will be prioritized. Sunday will be dedicated to logistical arrangements for departures and arrivals and will be free. Participants will be responsible for the Saturday dinner and Sunday lunch arrangement expenses.



Weekday schedule		
Time	Activity	Location
7.00	Breakfast	At home
8.00	Arrive on site/start lab activity at home, and Daily briefing	At home/on site
8.30-10.30	Field/lab activities	At home/on site
10.30-10.45	Break	At home/on site
10.45-13.00	Field/lab activities	At home/on site
13.00-13.30	Lunch	At home/on site
13.30-15.00	Field/lab activities	At home/on site
15.30-17.30	Classes/lab activities	At home
17.30-20.00	Free time	At home
20.00-...	Dinner and free time	At home
First two days schedule		
8.00 am	Breakfast	At home
8.30-13.00	Didactics/cultural trip	At home/on site
13.00-14.00	Lunch	At home/on site
14.00-17.30	Didactics/cultural trip	At home/on site
17.30-20.00	Free time	At home
20.00-...	Dinner and free time	At home
Saturday schedule		
8.00 am	Breakfast	At home
8.30-13.30	Cultural trip	At home/on site
13.30-14.00	Lunch	At home/on site
14.00-17.00	Cultural trip	At home/on site
17.30-20.00	Free time	At home
20.00-...	Dinner and free time	At home

Documentation, G.I.S., digital surveys will be held regularly in parallel with fieldwork.

# *Leisure*

In addition to the archaeological experience, participants will be able to enjoy a wide range of cultural sites, historic monuments, and natural sites of Tuscany.

Since the site is in the middle of a rich archaeological area, several cultural excursions in the surroundings are planned, such as the Etruscan necropolis of Sovana, the impressive vie cave, Sorano and the Pitigliano museums and castles.

Not to mention the various leisure activities that are also included: Bolsena Lake, Saturnia baths, and the numerous festivals will make the experience enjoyable and unforgettable.



# ***A ccommodation***

Accommodations: students will be accommodated in a modern facility in the Tuscan countryside, in triple-bed rooms with private bathrooms, close to the premises where communal activities and teaching will take place.

The schoolhouse address is: Montebuono, 58010 Sorano GR



**Groups with more than 15 students**



**Groups of 3 or fewer students**



**Groups of 15 or fewer students**



# ***Rules and tips - I***

## **Arrival and departure**

Students are responsible for arranging their own travel to and from Italy. The School is taking place in the municipality of Sorano (GR), in the south of Tuscany.

The closest airport is in Rome. We suggest the students to reach Rome by flight, take a train to GROSSETO, and, then, a bus to PITIGLIANO. Personnel are authorized to transport to and from the Pitigliano bus station.

On arrival Fridays, a meeting point will be arranged at PITIGLIANO Bus Station in the late morning for the applies. Students will be driven to the School accommodation by the staff. A second meeting point could be arranged in the first afternoon.

On departure Fridays, the staff will drive the students, in the morning, to PITIGLIANO Bus Station, where they could take buses to their departure place or any further destination.

## **Visas**

No Euro zone citizens are required to carry a passport valid for at least six months following the date of their arrival in Italy. No visa is required to enter the country for a stay shorter than 90 days. All students are highly encouraged to read and review information relevant to traveling to Italy posted on their government Foreign Office site (e.g. US Department of State's website).

## **Meals**

The breakfast (consisting of coffee, milk, tea or caffe latte, and pastries) will be consumed at the accommodation.

On Saturdays no dinner will be provided by staff.

On Sundays no lunch will be provided by staff.

Lunch and dinner, consisting of typical Italian dishes, will be held at the accommodation (International School fee only includes water; all other drinks are not included).

Every effort will be made to accommodate students with food allergies (nuts, shellfish, etc.); students with food allergies are required to inform the staff of their specific dietary restrictions upon application. We also will try to accommodate individual lifestyles and dietary choices (e.g. vegetarianism) too: student must inform the staff of any special request upon application, **no special dietary request after application will be taken in consideration.**

On request, students may ask staff members for any personal shopping (not included in the fee).

## **Internet access**

Internet access will be available at the accommodation, using staff devices upon request, at no additional cost.

There is WI-FI connection JUST in the refectory (AND in the rooms for smaller groups).

Personal computers and internet connections will be allowed.

**For normal internet connections, students are encouraged to purchase a data plan with an Italian mobile operator upon arrival at the airport.**

## **Laundry**

Laundry service is not included. Students should do their own washing (detergents will be supplied by the staff). They can also find some launderettes in the near town of Pitigliano.

## **Currency and personal shopping**

Every cash purchase must be in Euros.

Up-to-date data about Euro-US dollar exchange can be easily found online. Students will not incur in any additional fee for the duration of the field school, but they may want to purchase souvenirs, gifts and other personal items. Although major credit cards are widely accepted, a modest sum in cash may be useful. Money may be exchanged at local banks and exchange agencies, or simply withdrawn at local ATMs.

## **Mobile devices**

We strongly recommend you buy an Italian or International SIM card **before** your arrival at Sorano. Good phone or data offers are harder to find in the countryside than in the airports, where salespeople are more accustomed to helping foreign customers.

# ***Rules and tips - 2***

## **Safety first!**

All students will be equipped with appropriate safety devices. The activities and cultural trips will be conducted in compliance with the higher safety standards.

All ACT's activities follow the rules prescribed by the Legislative Decree no. 81 of 9 April 2008, also known as "*Testo unico in materia di salute e sicurezza sul lavoro*", and the related corrective measures, according with the Cultural heritage office of Tuscany's dispositions.

## **Health and medical information**

The participation in the School implies intense physical activity during the workday. It is mandatory that all students consult their family doctor to confirm that they will be able to endure the demands of working outdoors for several hours.

All students accepted in the program will be required to provide a doctor's note stating that they are in good health and able to participate in the field school safely. In case of students with medical conditions and/or special needs, a specialist's note will be required. In order to guarantee safety and proper intervention in case of emergency, medical history information must be included in the physician's note. Such information will be treated with absolute confidentiality and will not be disclosed to any third party, unless required to safeguard the student's health.

All the students enrolled in the field school **must have a valid international medical insurance for the entire duration of their stay in Italy**. Students are required to provide policy information prior to their arrival in Italy.

Given the potential exposure to pathogens in the soil, students must have had a tetanus vaccination or booster within the past ten years; no other vaccinations are required to travel in Italy.

## **Local Transports**

The staff will drive the students, materials, and supplies to and from the site on every workday, during cultural trips, and in case of emergency as well. Staff will try to grant students' wish of special trips, when free from activities.

## **Clothing and Equipment**

Students should plan to bring appropriate clothing for seasonal weather, providing the following items specifically for the field work:

- comfortable, waterproof long pants (no shorts allowed in the field) and shirts to be worn during field work;
- personal archaeological equipment;
- trekking shoes;
- comfortable work gloves;
- a hat;
- backpack;
- sunscreen and insect repellent;
- a flask or water bottle.

The following items are required for the accommodations:

- sleeping bag;
- shower and hand towels;
- personal toiletries;
- any personal medicine;
- basic school supplies.

## **Language**

The official language of the field school is English, and no knowledge of Italian is required.

However, Italian or French knowledge will be taken as an advantage.

# *Join us!*

## **Admission procedures**

The School is open to both undergraduate and graduate students in Archaeology. Admission is limited to 20 students per shift.

To attend an archaeology field school, it's generally expected that students have completed at least one course in excavation techniques and methodologies. Those who meet this prerequisite will be given priority during registration. However, applications from less experienced students will also be considered on an exceptional basis: students will be adequately trained during the campaign. However, to ensure everyone is on the same page, we will start each shift with a series of brief introductory courses. These sessions will help bring all participants up to the same level of understanding and prepare them for the tasks ahead.

Students interested in the International School must submit their application with a cover letter (1000 characters max) and a CV to [info@culturaterritorio.org](mailto:info@culturaterritorio.org).

You can find the application form at [www.culturaterritorio.org](http://www.culturaterritorio.org).

Minimum stay: **Applicants must attend at least one shift (14 days) in summer or one week in the other seasons.**

### **Application deadlines: 21 days before each session begins**

The staff reserves the right to verify any information reported in the CV and to request additional documentation (e.g.: advising reports; references) at its discretion, before coming to a decision on the enrollment.

An e-mail of confirmation or refusal will be sent to each applicant.

Upon acceptance, students will receive detailed information on the following enrollment requirements:

1. Medical certificate of good mental and physical health and medical history – if students have medical conditions, the certificate should be filled out and signed by a treating specialist.
2. Proof of Insurance – **students must have a valid international health and injury insurance and must provide the insurance provider's contact information as well as the policy number.**
3. Release form – the participant must read and accept the terms of the field school; a signed release form must be submitted before the starting date of the School.
4. Payment, to be made through credit transfer. 50% of the payment will be requested within 1 week after acceptance. Balance should be paid upon arrival at the School.

Students will be required to provide all documentation and the 50% deposit within one week from acceptance. The failure to provide all above-mentioned documents and payment within the terms means an automatic forfeiture of the student's place in the School.

For any further question, please e-mail our director Dr Luca Mario Nejrotti at [presidente@culturaterritorio.org](mailto:presidente@culturaterritorio.org). Or look for further information at [www.culturaterritorio.org](http://www.culturaterritorio.org).



# ***Fees and academic credits***

**Special rates will be applied to students from affiliated universities.**

**Whole campaign fee (10 weeks): € 9100.**

**Participants for a 2-week session: € 2000.**

AIA Members and students from partner institutions will get a 10% reduction.

Fees will cover local transports, housing, meals, excavation, laboratory equipment, and staff costs; anything not specified is not included.

There are no application fees; however, students are required to pay half support fees within 1 week after admission.

In case of **withdrawal up to one weeks before the start of the International School**, the fee will be refunded minus a non-refundable deposit of **25%**.

After this term, fees will not be refunded.

## **Payment method**

Money transfer to our bank account.

Associazione "Cultura e Territorio"

Via Baretto, 125 – 10125 Torino

C.F. 97687910014

IBAN: IT23R0321101001052848844830

Bank name: Banca Patrimoni Sella and C. S.p.A.

BIC: SELBIT22

SWIFT: SENVIT1XXX

Town: Torino, Piemonte, Italia

You can pay just the first 50% of the amount OR the whole amount plus any costs for the money transfer.

In case you choose to pay just half fee you should be able to pay the balance upon arrival, in cash.

You can also send money by PayPal to our account ([presidente@culturaterritorio.org](mailto:presidente@culturaterritorio.org)), but only **in form of a friendly donation not as a purchase**.

## **Credits**

In order to enable students to gain credits from their University, a signed certificate will be issued, testifying all the activities of the School in details.



## ***More about***

### **TO KNOW MORE, LOOK AT THESE VIDEOS (SUBTITLED):**

<http://www.youtube.com/watch?v=KHCioAuDfI0;>

[http://www.youtube.com/watch?v=fVdK-ACcuE&list=PLK1\\_iz-oV1WjmG7mcRd-elTCMiRH1J--g ;](http://www.youtube.com/watch?v=fVdK-ACcuE&list=PLK1_iz-oV1WjmG7mcRd-elTCMiRH1J--g;)

<https://www.youtube.com/watch?v=XEPgmL-mkXE;>

[https://www.youtube.com/watch?v=GX0eS\\_YS\\_lw.](https://www.youtube.com/watch?v=GX0eS_YS_lw;)

### **BIBLIOGRAPHY**

BARBIERI G., BUCCI I., DICIOTTI F., FERRARESE LUPI A., 2011, SORANO (GR) LOCALITÀ LA BIAGIOLA: SAGGIO DI SCAVO, IN NOTIZIE DEL “NOTIZIARIO DELLA SOPRINTENDENZA PER I BENI ARCHEOLOGICI DELLA TOSCANA”, 6.

FERRARESE LUPI A., 2011, LOCALITÀ LA BIAGIOLA: RELAZIONE PRELIMINARE DI SCAVO (CAMPAGNE 2009-2010), IN BARBIERI G., IL TERRITORIO DI SOVANA. UN DECENNIO DI RICOGNIZIONI E INDAGINI ARCHEOLOGICHE, PP. 83-92.

TURCHETTI M. A., DICIOTTI F., CORSI J., NEJROTTI L., FERRARESE LUPI A., 2012, SORANO (GR). INDAGINI ARCHEOLOGICHE NEL SITO DELLA BIAGIOLA: CAMPAGNA DI SCAVO 2011, IN “NOTIZIARIO DELLA SOPRINTENDENZA PER I BENI ARCHEOLOGICI DELLA TOSCANA”, 7.

FERRARESE LUPI A., NEJROTTI L. M., TURCHETTI M. A., 2013, INDAGINI ARCHEOLOGICHE NEL SITO DELLA BIAGIOLA CAMPAGNA 2012, IN NOTIZIE DEL “NOTIZIARIO DELLA SOPRINTENDENZA PER I BENI ARCHEOLOGICI DELLA TOSCANA”, 8, 2012, PP. 618-621.

NEJROTTI L. M., TURCHETTI M. A., 2014, INDAGINI ARCHEOLOGICHE NEL SITO DELLA BIAGIOLA CAMPAGNA 2013, IN NOTIZIE DEL “NOTIZIARIO DELLA SOPRINTENDENZA PER I BENI ARCHEOLOGICI DELLA TOSCANA”, 9, 2013, PP. 518-519.

NEJROTTI L. M., BUCCI I., TURCHETTI M. A., 2015, INDAGINI ARCHEOLOGICHE NEL SITO DELLA BIAGIOLA CAMPAGNA 2014, IN NOTIZIE DEL “NOTIZIARIO DELLA SOPRINTENDENZA PER I BENI ARCHEOLOGICI DELLA TOSCANA”, 10, 2014, PP. 528-530.

[Http://www.Fastionline.Org/excavation/micro\\_view.Php?fst\\_cd=aiac\\_4355&curcol=sea\\_cd-aiac\\_8781.](Http://www.Fastionline.Org/excavation/micro_view.Php?fst_cd=aiac_4355&curcol=sea_cd-aiac_8781.)



# Join our international community!!!

We know how much important it is to compare different scientific methods and to connect with people from different backgrounds. Over the years we have been able to create relationships that go beyond the simple duration of the campaign and still last today.



**Please note that B.I.S.A. mascot is a very good big dog: people allergic or particularly afraid of dogs should choose another school.**

