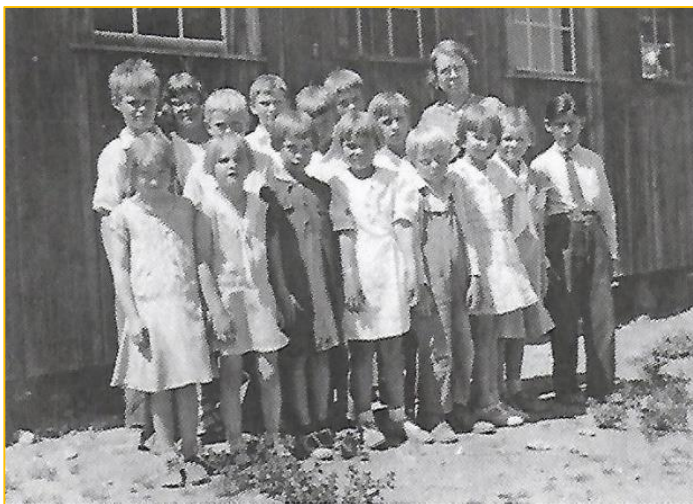


Join the NAU Historical Archaeology Field School at Apex, Arizona in Summer 2020!

May 25 to June 26



In collaboration with the Kaibab National Forest, we are hosting our first field season at Apex, Arizona, a 1900s logging town along the Grand Canyon Railway near Tusayan. We will conduct survey and excavations of the schoolhouse, domestic features, and sites of labor. We will also take field trips to the Grand Canyon and prehistoric sites around the area!

ANT511—3 credits

Must have 12 Anthropology credits and instructor permission to enroll

Undergraduate and graduate students with an interest in Historical Archaeology and looking for hands-on experience in excavation, survey, mapping, and artifact analysis are encouraged to apply!

Cost: \$2,077.00* —Includes transportation to and from Flagstaff and the site, meals, and field school housing.

- Not included: housing outside of field days and personal expenses



*Cost based on Summer 2019 tuition and subject to change.

NAU NORTHERN
ARIZONA
UNIVERSITY

College of Social and Behavioral Sciences

For more information and an application, contact Dr. Emily Dale at emily.dale@nau.edu